

# B125001

# 50058



- ▶ 主要技术特性 (Main Specifications)
- ▶ 适用导线规格 (Applicable wire) : AWG32#~28#
- ▶ 适用基板厚度 (Applicable PC board thickness) : 0.8mm
- ▶ 温度范围 (Temperature range) : -25°C~+85°C
- ▶ 额定电压 (Voltage rating) : 125V AC, DC
- ▶ 额定电流 (Current rating) : 1A AC, DC
- ▶ 接触电阻 (Contact resistance) :  $\leq 0.02\Omega$
- ▶ 绝缘电阻 (Insulation resistance) :  $\geq 500M\Omega$
- ▶ 耐压 (Withstanding voltage) : 500V AC/minute

### 材料及电镀规格 Material and Finish

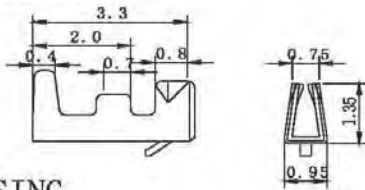
型号 Type	材料 Material	材料厚度 Material Thickness	电镀规格 Finish
插座 WAFER	塑胶 HOUSING	—	N/A
	针PIN	黄铜 Brass	镀锡 Tin-plated
孔座 HOUSING	PA66 UL94V-0	—	N/A
端子 TERMINAL	锡青铜 Phosphor bronze	0.15mm	镀锡 Tin-plated

### 产品尺寸图 Product size chart

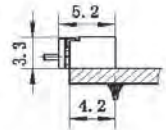
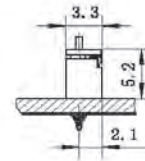
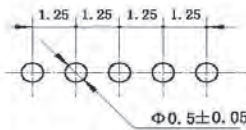
 单位: mm 一般公差:  $\pm 0.20$ 

### TERMINAL

#### B125001-4

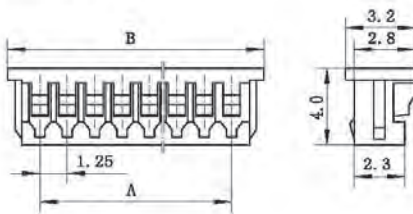


### 安装尺寸 (Mounting measurement)



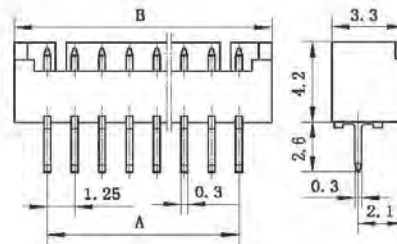
### HOUSING

#### B125001-2

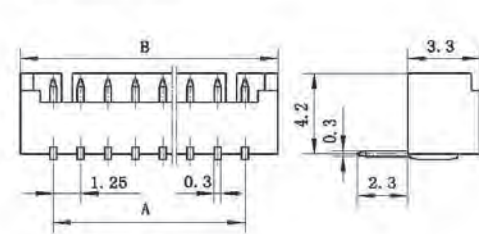


### WAFER

#### B125001-1



#### B125001-1W



### HOUSING

极数 Circuits	型号 Type	尺寸 (Dimensions) mm		备注型号 P. S. Type
		A	B	
2	B125001-2-02	1.25	4.25	50058-02Y
3	B125001-2-03	2.50	5.50	50058-03Y
4	B125001-2-04	3.75	6.75	50058-04Y
5	B125001-2-05	5.00	8.00	50058-05Y
6	B125001-2-06	6.25	9.25	50058-06Y
7	B125001-2-07	7.50	10.50	50058-07Y
8	B125001-2-08	8.75	11.75	50058-08Y
9	B125001-2-09	10.00	13.00	50058-09Y
10	B125001-2-10	11.25	14.25	50058-10Y
11	B125001-2-11	12.50	15.50	50058-11Y
15	B125001-2-15	17.50	20.50	50058-15Y

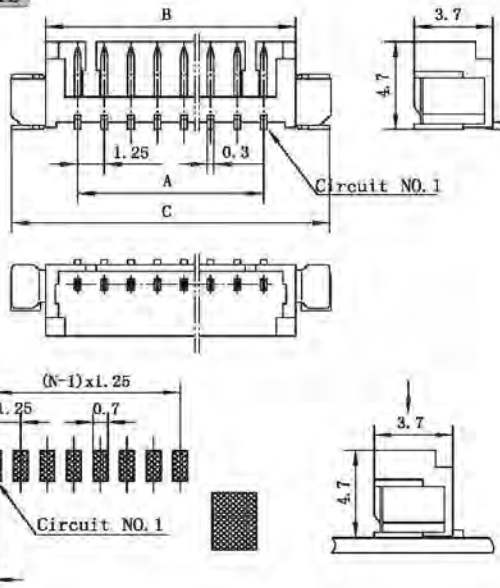
# B125001

# 50058

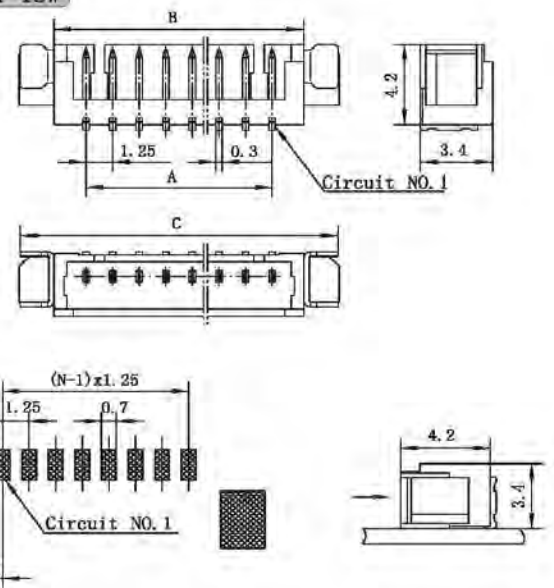
## WAFER

极数 Circuits	型号 Type		尺寸(Dimensions)mm		备注型号 P. S. Type	
			A	B		
2	B125001-1-02	B125001-1W-02	1.25	4.25	50058-02A	50058-02AW
3	B125001-1-03	B125001-1W-03	2.50	5.50	50058-03A	50058-03AW
4	B125001-1-04	B125001-1W-04	3.75	6.75	50058-04A	50058-04AW
5	B125001-1-05	B125001-1W-05	5.00	8.00	50058-05A	50058-05AW
6	B125001-1-06	B125001-1W-06	6.25	9.25	50058-06A	50058-06AW
7	B125001-1-07	B125001-1W-07	7.50	10.50	50058-07A	50058-07AW
8	B125001-1-08	B125001-1W-08	8.75	11.75	50058-08A	50058-08AW
9	B125001-1-09	B125001-1W-09	10.00	13.00	50058-09A	50058-09AW
10	B125001-1-10	B125001-1W-10	11.25	14.25	50058-10A	50058-10AW
11	B125001-1-11	B125001-1W-11	12.50	15.50	50058-11A	50058-11AW
15	B125001-1-15	B125001-1W-15	17.50	20.50	50058-15A	50058-15AW

## WAFER

**B125001-1S**


## WAFER

**B125001-1SW**


## WAFER

极数 Circuits	型号 Type		尺寸(Dimensions)mm			备注型号 P. S. Type	
			A	B	C		
2	B125001-1S-02	B125001-1SW-02	1.25	4.25	7.65	50058-02AS	50058-02ASW
3	B125001-1S-03	B125001-1SW-03	2.50	5.50	8.90	50058-03AS	50058-03ASW
4	B125001-1S-04	B125001-1SW-04	3.75	6.75	10.15	50058-04AS	50058-04ASW
5	B125001-1S-05	B125001-1SW-05	5.00	8.00	11.40	50058-05AS	50058-05ASW
6	B125001-1S-06	B125001-1SW-06	6.25	9.25	12.65	50058-06AS	50058-06ASW
7	B125001-1S-07	B125001-1SW-07	7.50	10.50	13.90	50058-07AS	50058-07ASW
8	B125001-1S-08	B125001-1SW-08	8.75	11.75	15.15	50058-08AS	50058-08ASW
9	B125001-1S-09	B125001-1SW-09	10.00	13.00	16.40	50058-09AS	50058-09ASW
10	B125001-1S-10	B125001-1SW-10	11.25	14.25	17.65	50058-10AS	50058-10ASW
11	B125001-1S-11	B125001-1SW-11	12.50	15.50	18.90	50058-11AS	50058-11ASW
15	B125001-1S-15	B125001-1SW-15	17.50	20.50	23.90	50058-15AS	50058-15ASW